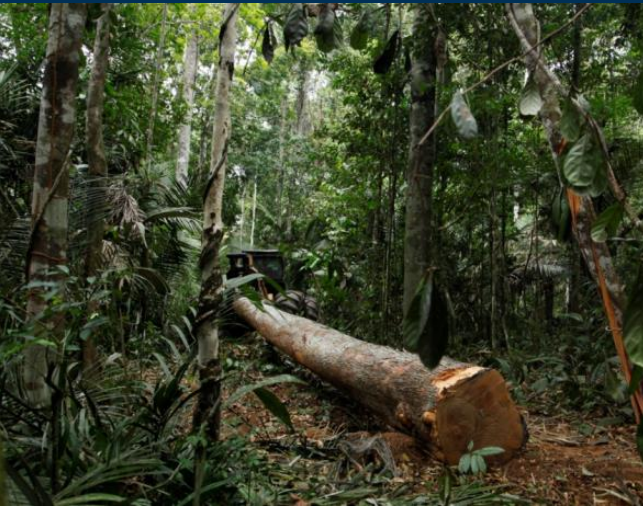


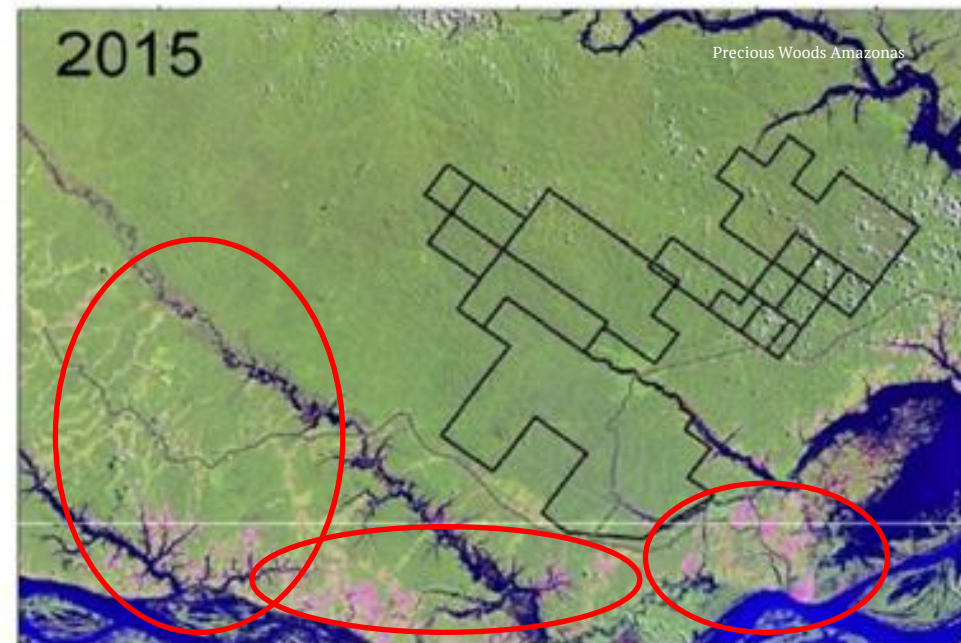
# Trends in Europe regarding verified sustainable tropical timber

Mark van Benthem, Probos



# Stichting Probos, *Expertise center*

- Not for profit expertise center, mission SFM  
=> Certification is a good tool; we need more area and tools, to grow impact on forests



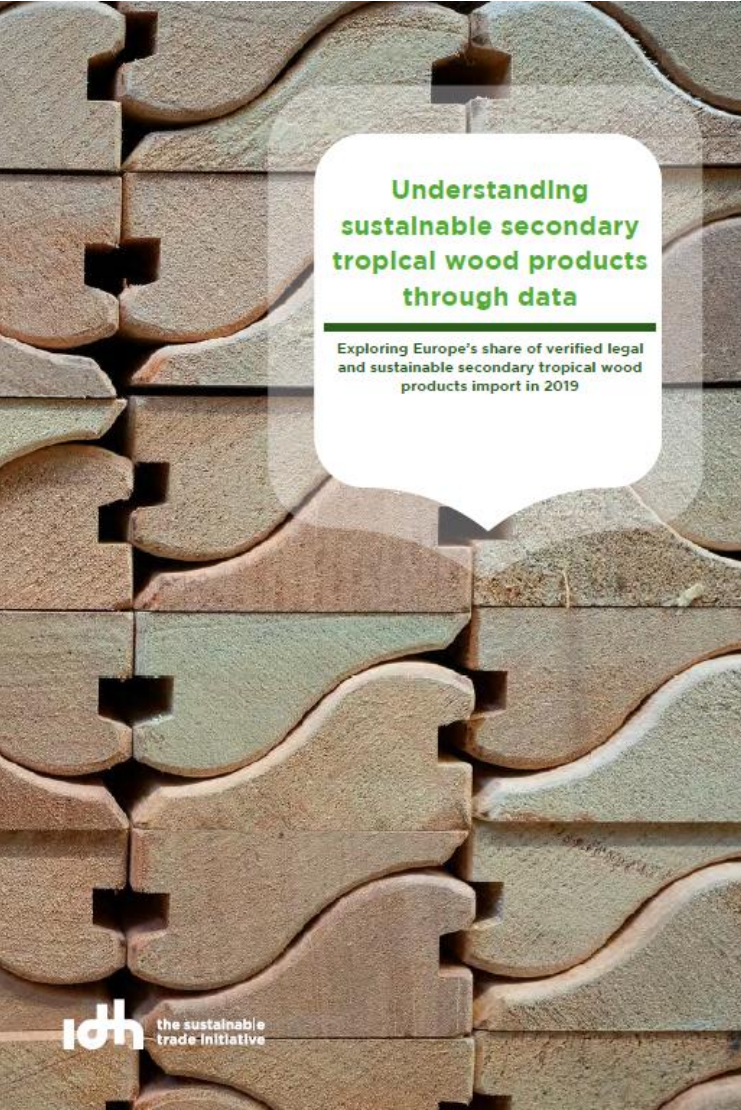


# Current state of affairs



## Unlocking Sustainable Tropical Timber Market Growth Through Data

Mapping Europe's sustainable tropical timber footprint and growing its global impact



## Understanding sustainable secondary tropical wood products through data

Exploring Europe's share of verified legal and sustainable secondary tropical wood products import in 2019



## Europe's sourcing of verified tropical timber and its impact on forests: What Next?

Exploring the EU27 & UK's share of verified legal and sustainable tropical timber product imports

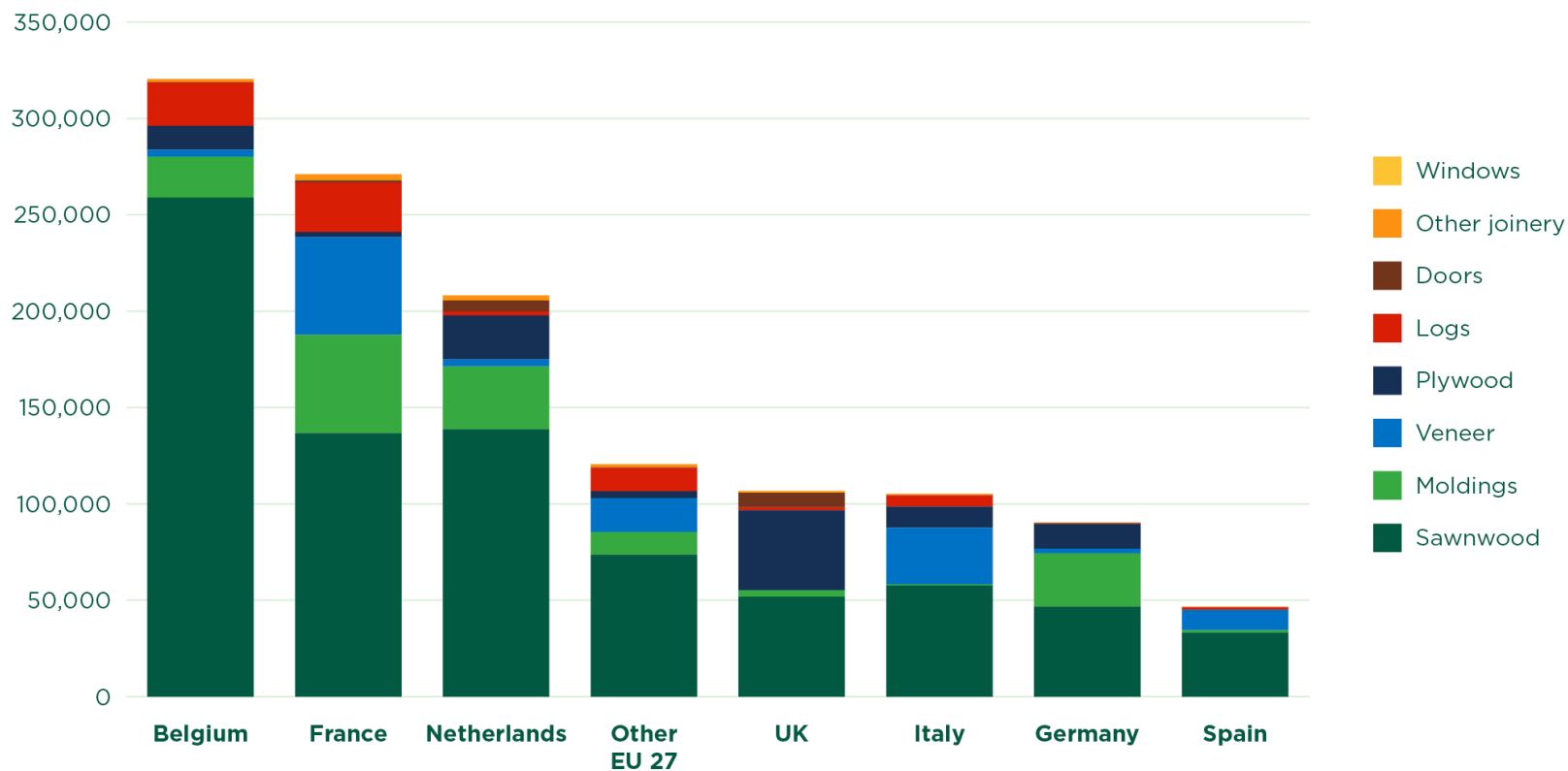
# Market Data Report 2020

- Scope: primary + selection secondary tropical timber products (excl. plantations):
  - Doors
  - Mouldings
  - Other joinery
  - Windows
- Exposed to certification estimate + verified legal and FLEGT licensed

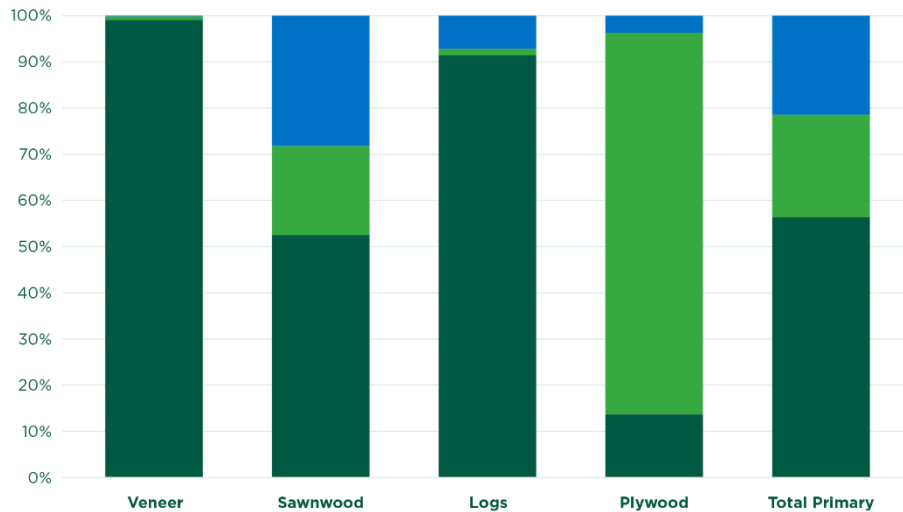




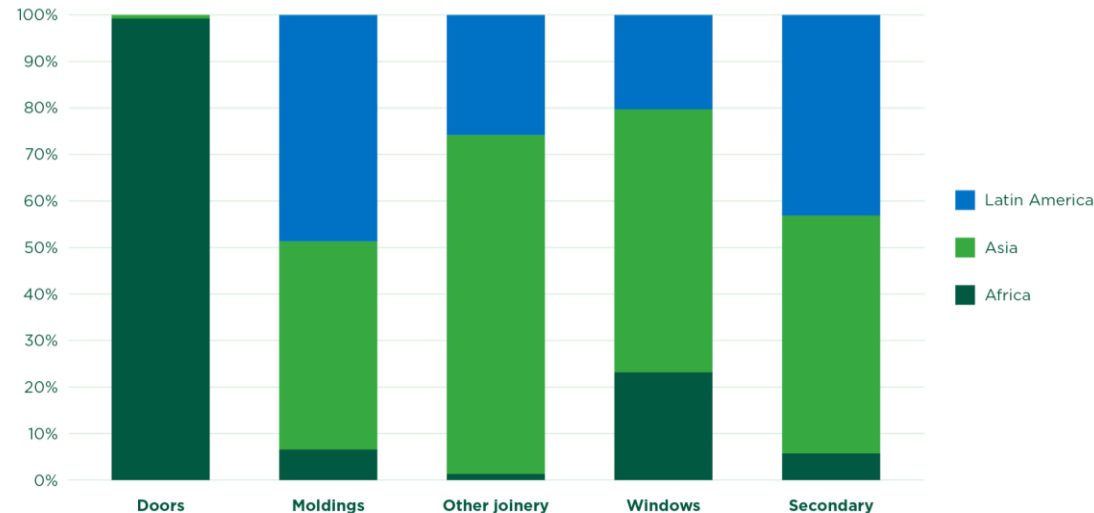
# Major EU27+UK importers by product group (tonnes)



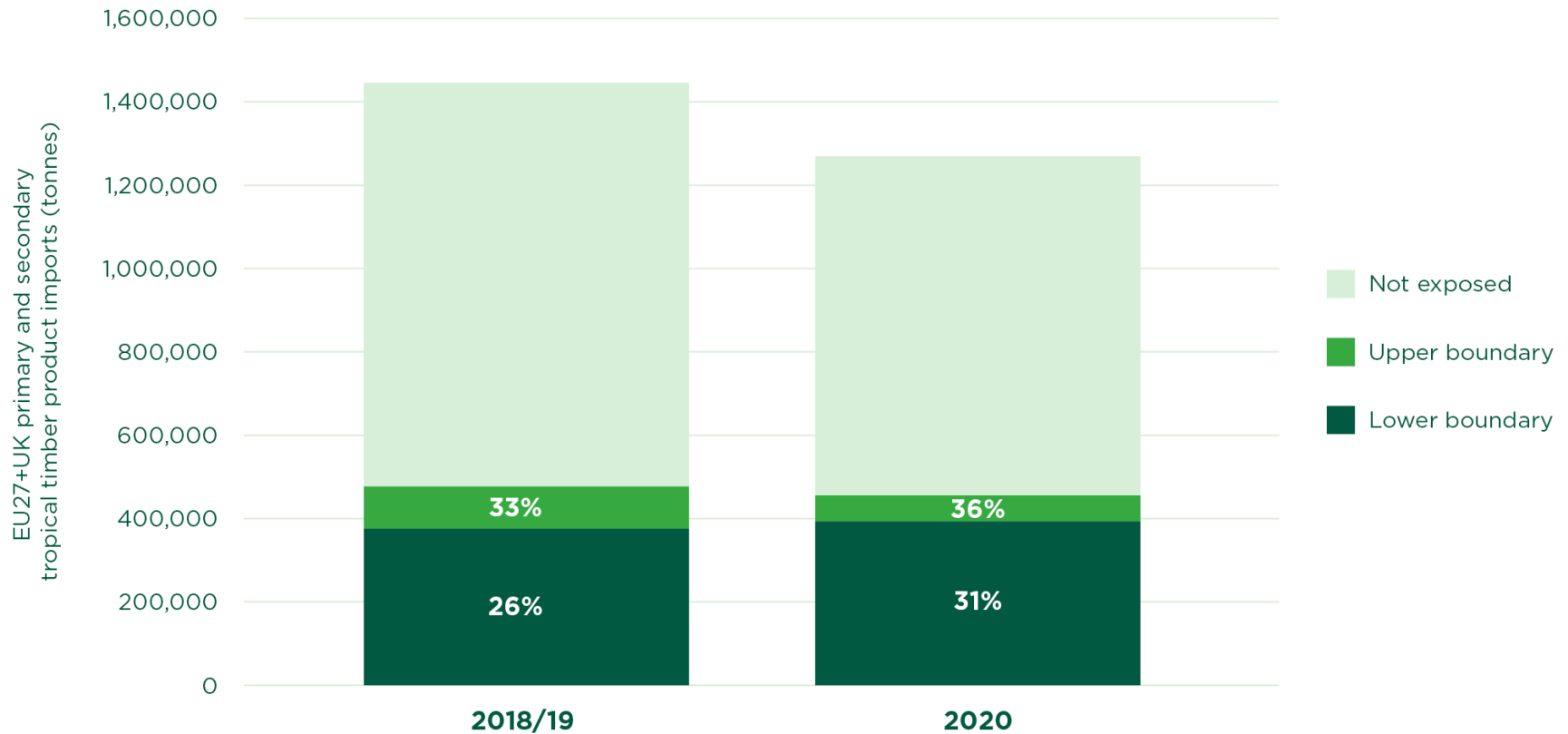
# Relative share by continent of origin



## Secondary timber products

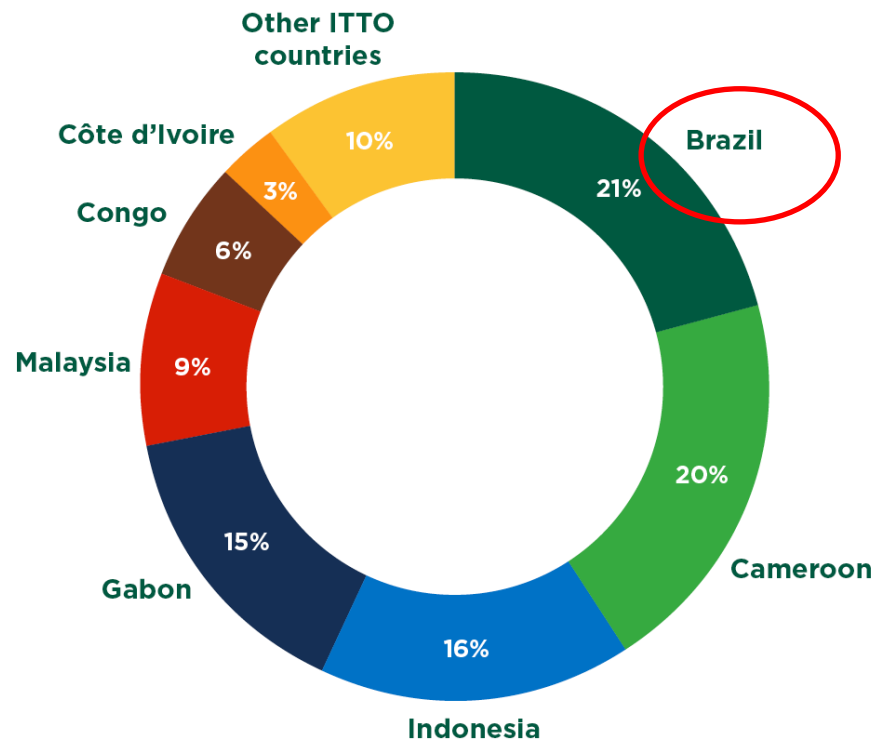


# EU27+UK imports exposed to certification



# Relative share Brazil

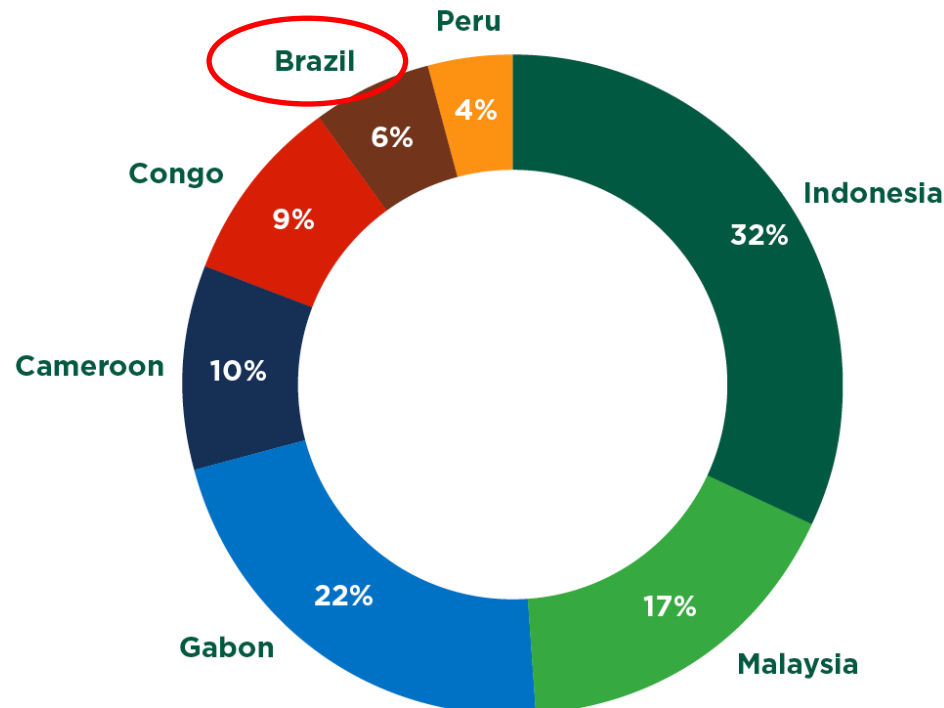
**Figure 5** Relative share (%) of the EU27+UK direct primary and secondary tropical timber product imports by country of origin in 2020.



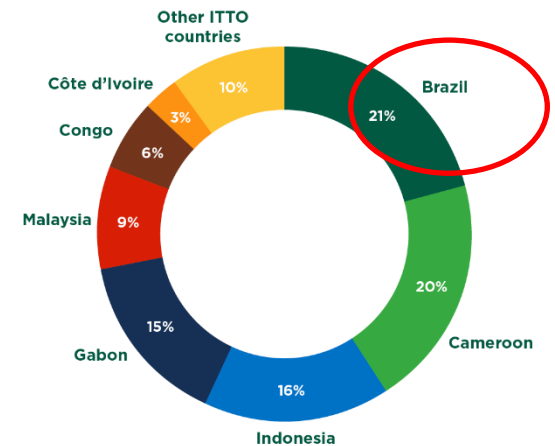


# Relative share Brazil

**Figure 10** Relative share of EU27+UK direct primary and secondary tropical timber product imports exposed to certification in 2020 by ITTO producer country.



**Figure 5** Relative share (%) of the EU27+UK direct primary and secondary tropical timber product imports by country of origin in 2020.



More details per country in report  
via [www.idhsustainabletrade.com](http://www.idhsustainabletrade.com)  
and [www.probos.nl](http://www.probos.nl)

# Developments, various a.o.:

1. <Increasing importance local markets>
2. Stricter requirements for documentation, e.g.:
  - a) EUTR, GPP / STPP, etc.
  - b) FERC Regulation (EC's legislative proposal to reduce imported deforestation (Nov 17). The draft regulation obliges DDS, 'deforestation-free':
    - No deforestation no forest degradation (harvesting operations need to be sustainable). EUTR is redundant and will be repealed.
3. Growing demand for timber as a (THE) biobased, circular, sustainable, etc. material



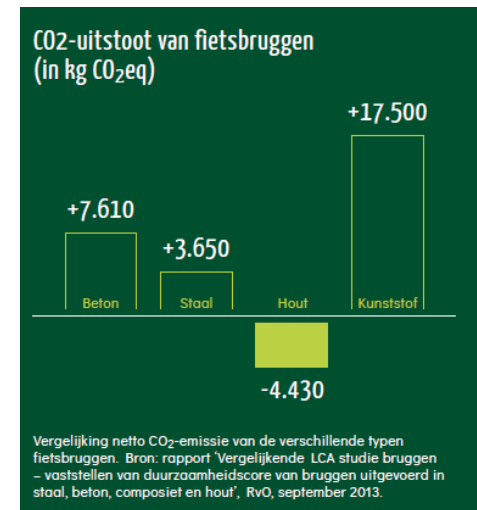
# WELKOM IN DE NIEUWE HOUTEN EEUW.



# E.g. NTTA 21st century: Century of wood

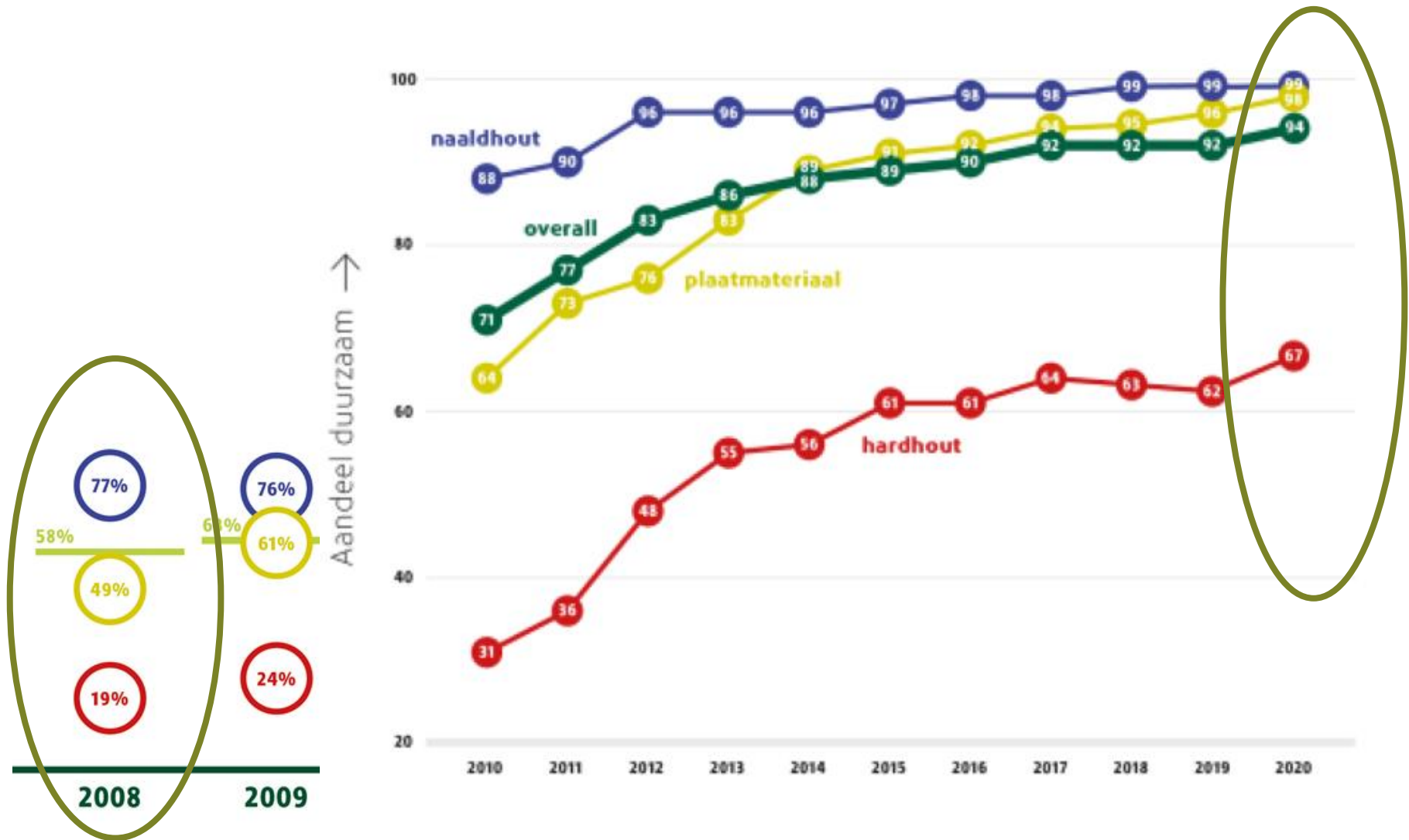
P&R and comms focus:

- Biobased
- Circular economy
- CO2 (Zero Carbon)
- Etc.



=> Verified sustainable pre-condition, for scoring well in LCA's, EPDs etc!

# Sector embraces verified sustainable

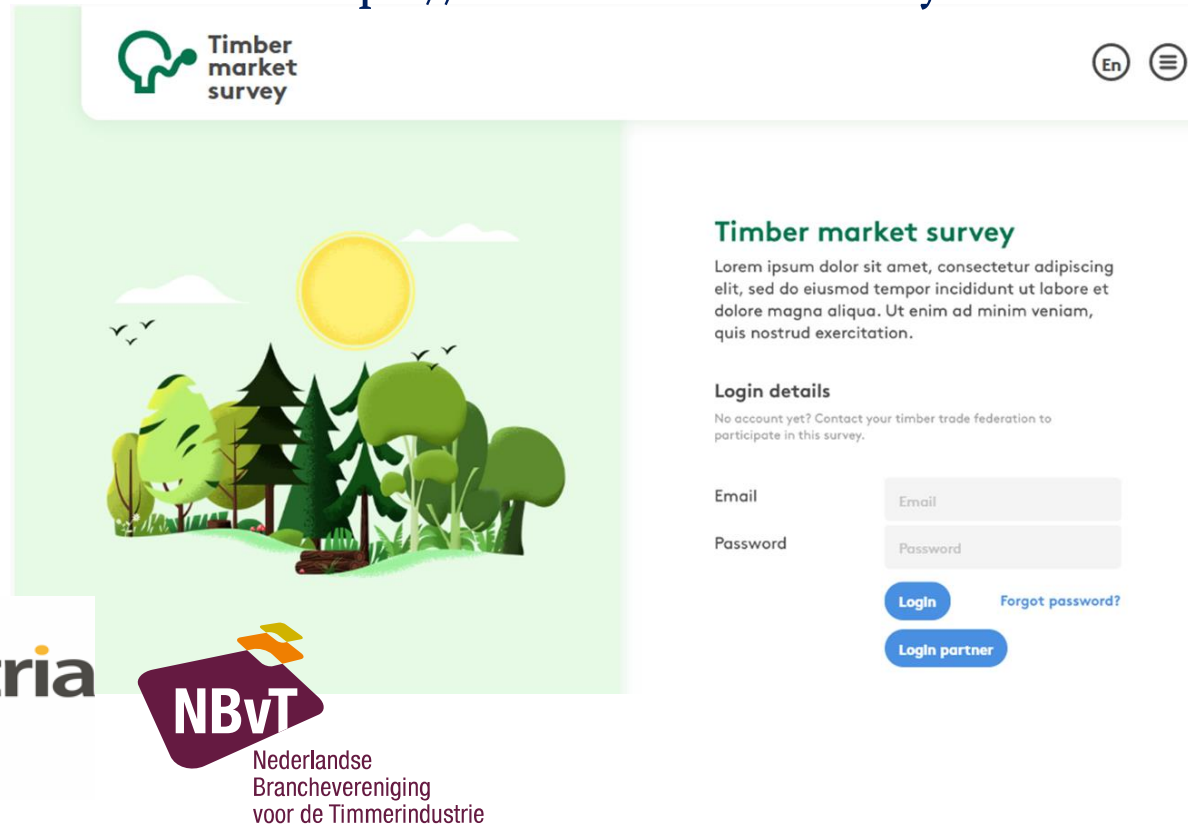


# Sector to source responsibly, to support LCA's and positive messaging

- Trust in timber
- Transparency
- Credibility

Thémis:

<https://timbermarketsurvey.com>



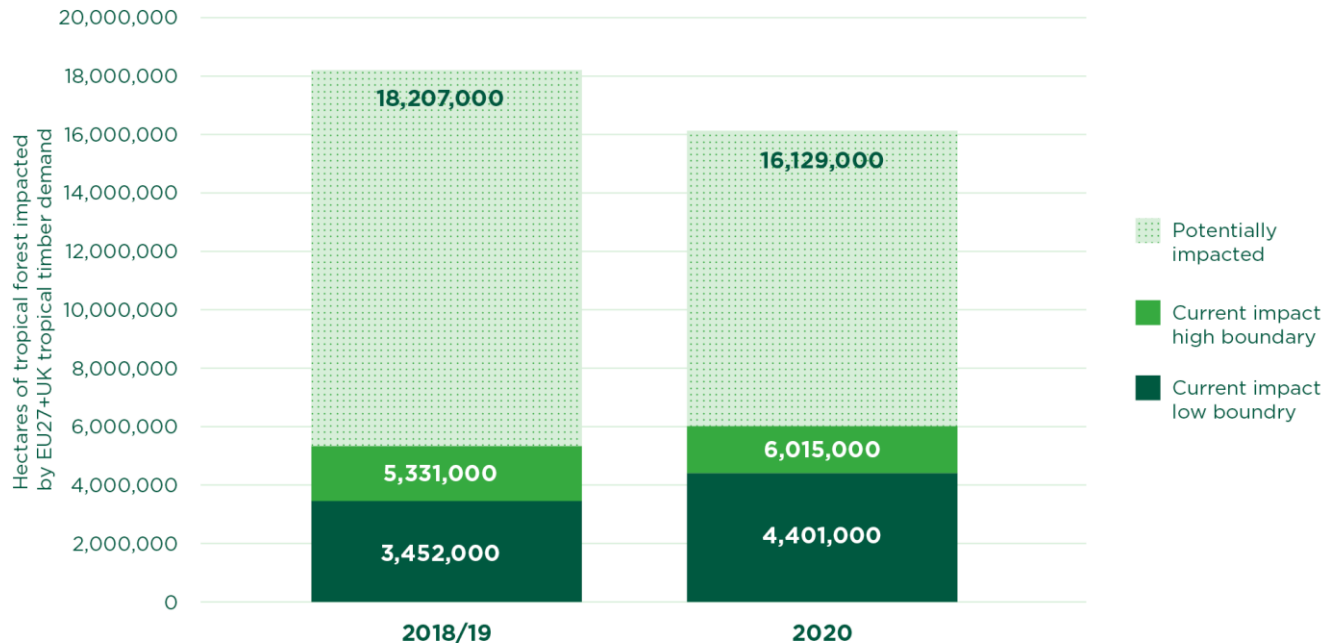
The screenshot shows the homepage of the 'Timber market survey' website. The header features the 'Timber market survey' logo and navigation links for 'En' and a menu. The main content area has a large green illustration of a forest scene with a sun, clouds, and birds. To the right of the illustration, the text 'Timber market survey' is followed by a placeholder paragraph: 'Lorem ipsum dolor sit amet, consectetur adipiscing elit, sed do eiusmod tempor incididunt ut labore et dolore magna aliqua. Ut enim ad minim veniam, quis nostrud exercitation.' Below this, the 'Login details' section includes a note: 'No account yet? Contact your timber trade federation to participate in this survey.' There are input fields for 'Email' and 'Password', and buttons for 'Login', 'Forgot password?', and 'Login partner'. At the bottom of the page, there is a purple logo for 'NBvT' (Nederlandse Branchevereniging voor de Timmerindustrie).





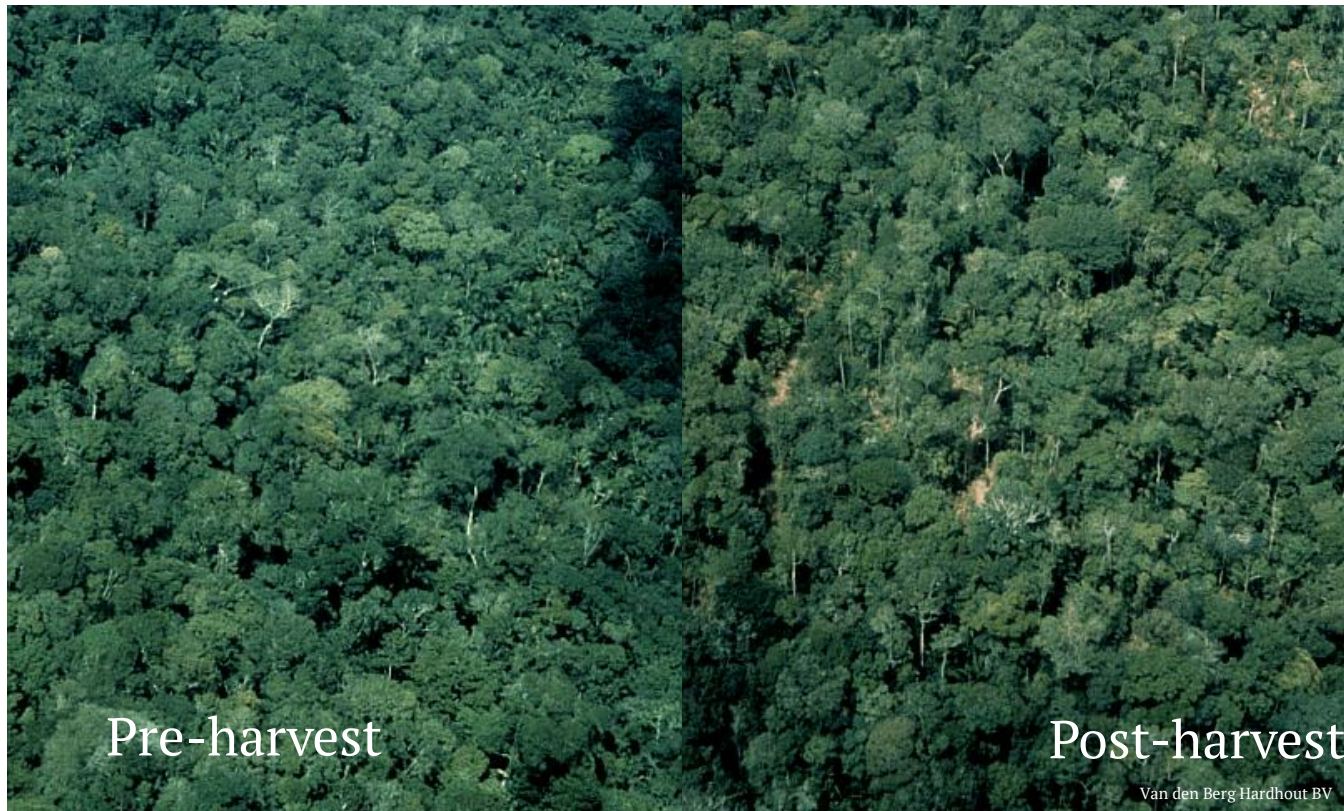
# Potential impact on tropical forests

**Figure 12** Forest area currently and potentially impacted by EU27+UK primary and secondary tropical timber product imports. The bars indicate the estimated lower and upper boundaries for impacted forest area based on the exposure method.



# Thank you!

Contact: [mark.vanbenthem@probos.nl](mailto:mark.vanbenthem@probos.nl)



# Scope



Mark van Benthem  
Probos



[Back](#)

[Next](#)

## Product groups

Please select the product groups that you traded in the reference year.  
Only selected product groups will appear in the rest of the survey.

### Sawn timber, panels and mouldings

- ☐ Sawn timber [?](#)
- ☐ Particle boards [?](#)
- ☐ OSB [?](#)
- ☐ Fibre boards [?](#)
- ☐ Veneer [?](#)
- ☐ Plywood [?](#)
- ☐ Decking [?](#)
- ☐ Other mouldings [?](#)

### Joinery products

- ☐ Doors & accessories [?](#)
- ☐ Windows [?](#)
- ☐ Shuttering [?](#)
- ☐ Shingles & shakes [?](#)
- ☐ Posts & beams [?](#)
- ☐ Flooring [?](#)
- ☐ Other joinery [?](#)

### Roundwood products


- ☐ Sawlogs [?](#)
- ☐ Poles [?](#)

### Other products

- ☐ Engineered wood products [?](#)
- ☐ Others [?](#)





# Scope


 Timber market survey


Mark van Benthem  
Probos

En

 Product groups

 Group categories

 Certification Schemes

 Country of origin

Back

Next

Sawn timber

IMPORT

Tropical hardwood

CERTIFIED SUSTAINABLE

☒ FSC

☒ PEFC

THIRD PARTY LEGALITY VERIFICATION SCHEMES

☒ OLB

UNCERTIFIED WOOD

Uncertified wood

Total volume

250

m<sup>3</sup>

Remaining volume

0

m<sup>3</sup>

Country of harvest

Please select the country or countries in which the wood has been harvested and specify the corresponding volume.

Cameroon

250

m<sup>3</sup>

Please specify suppliers

Amount

Names of suppliers...

# Dashboarding companies

