



December, 2022

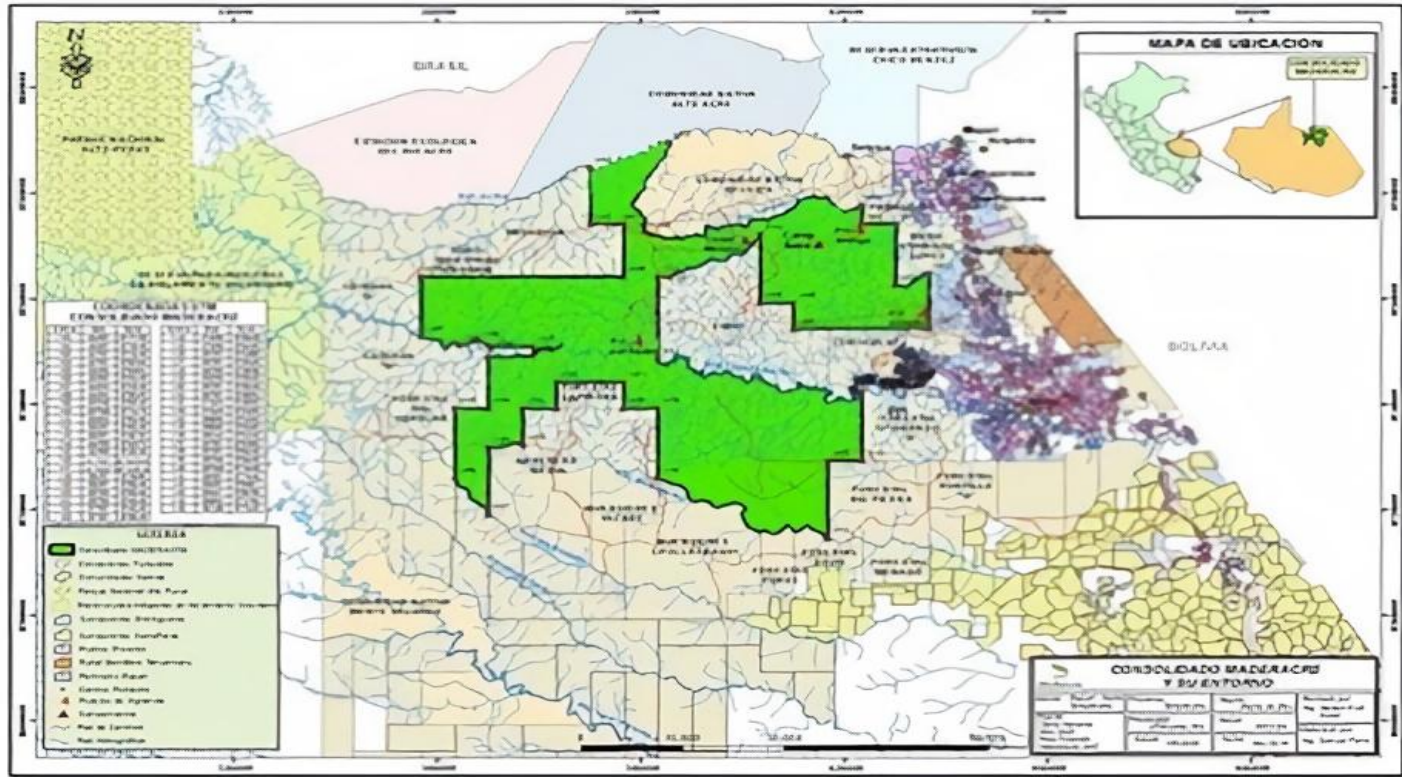
Who we are



Founded in 2002, we are part of the Peruvian Wong Group.

We are a proud member of ATIBT since 2022.

Who we are





Sustainable Forest Management

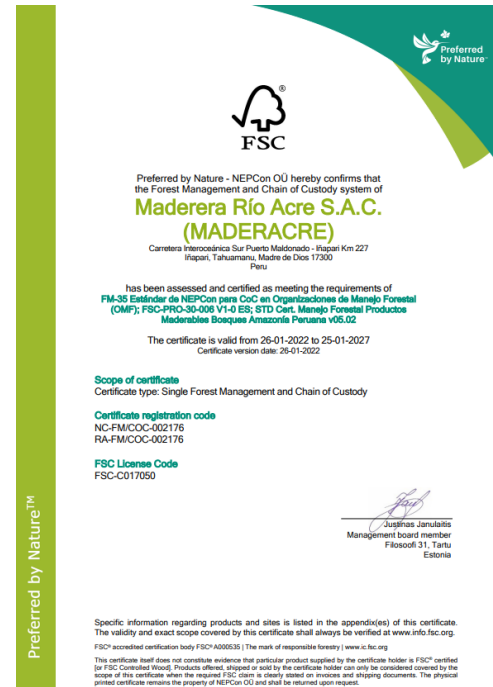
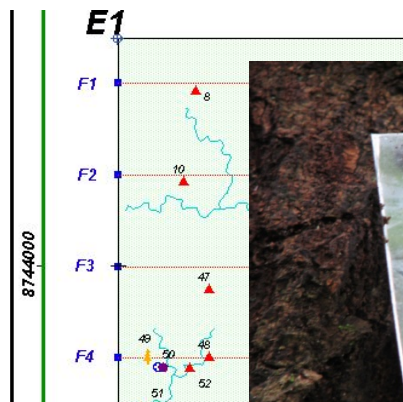
Foto: Perú Bosques

Extract only what the forest is
capable to regenerate

An aerial photograph of a dense, lush tropical forest. The canopy is a mix of various shades of green, with some taller trees showing lighter, more yellowish-green foliage. The text "We harvest 1 tree per hectare, every 20 years" is overlaid in white, centered on the image.

We harvest 1 tree per hectare,
every 20 years

And do it in a sustainable way



FSC proves timber's legal origin and sustainability to produce it

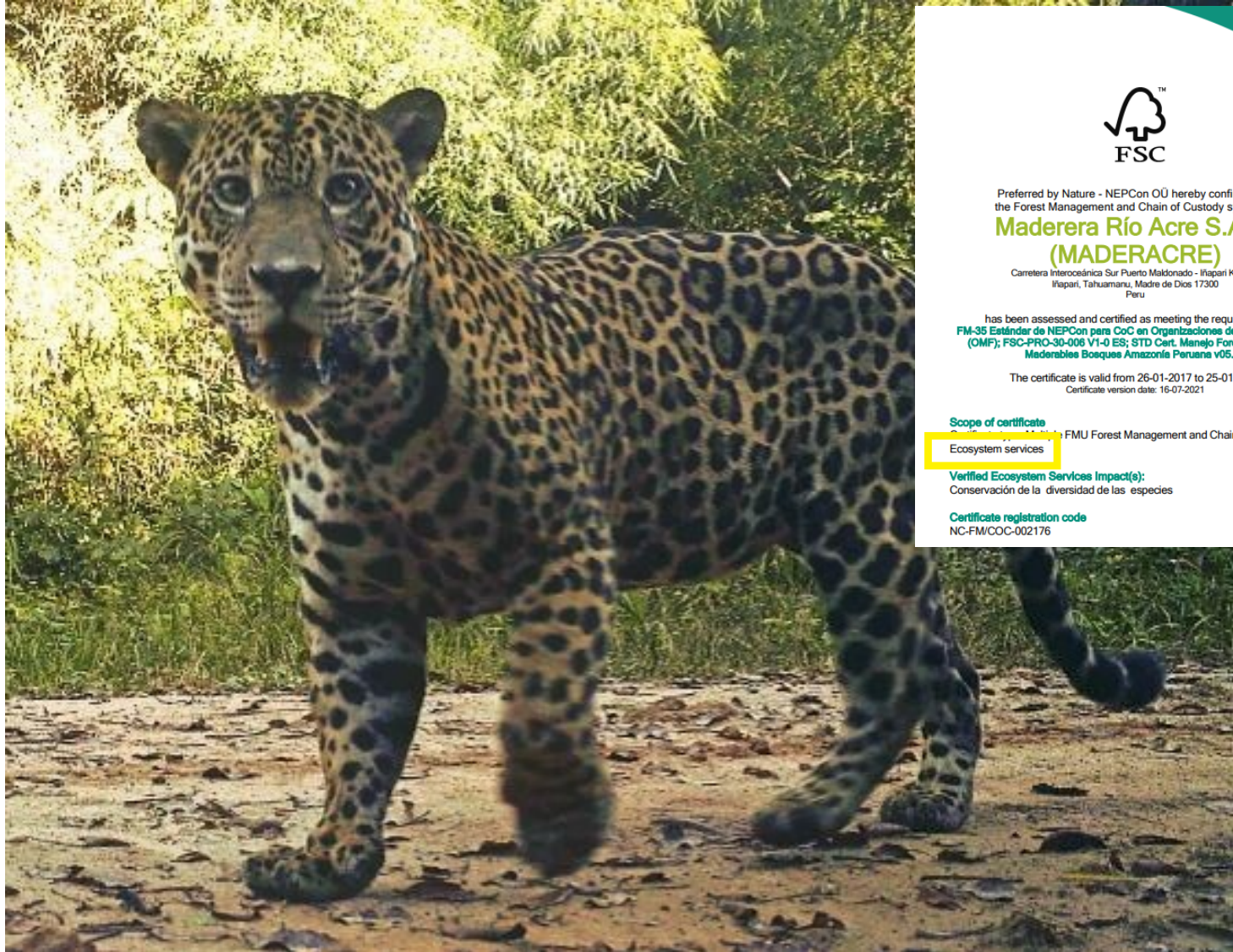
FSC Certificate NC-MF/CoC-002176

FSC Certificate NC-COC-002189

350 Direct jobs

30% of Iñapari
District's
employable
population





Since 2019 we have accredited the FSC Certification of Ecosystem Services for Biodiversity Conservation and Carbon Sequestration

Top 5
(2022)



Timber and pulp: ESG policy transparency assessments

According to the London Zoological Society, SPOTT, we are ranked in the 5th position of the most transparent forest in the World regarding our policies and practices related to environmental, social and governance issues (ESG)

Supporting 10 SDGs





Since 2009



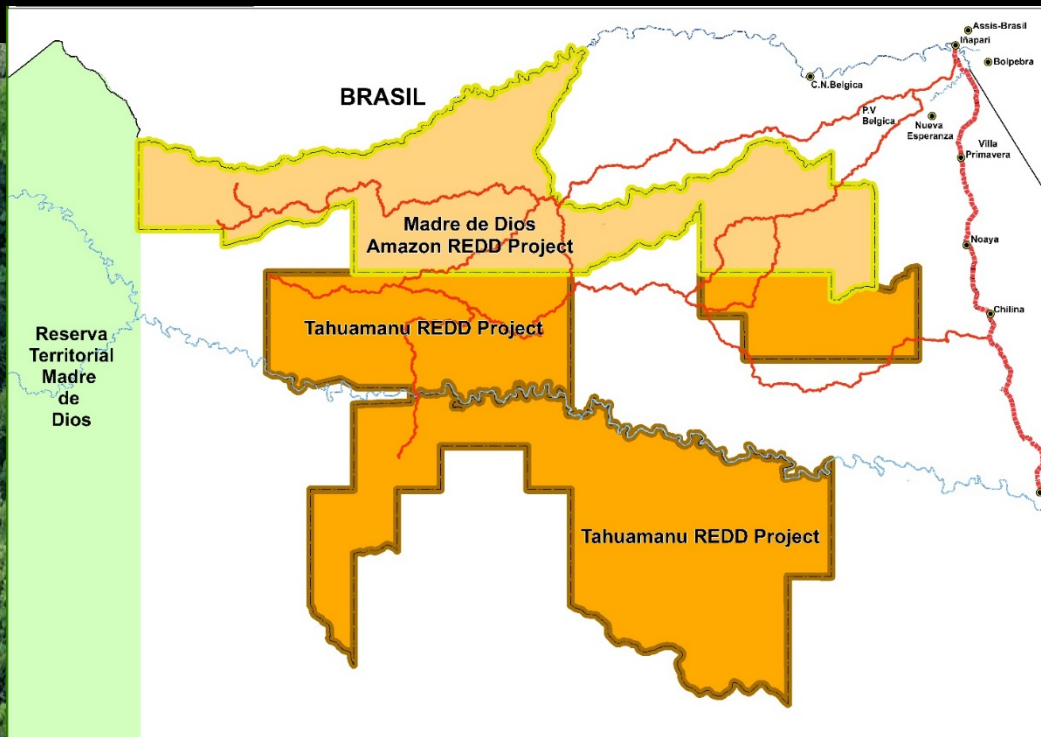
Since 2017



REDD Projects validated by Verra Voluntary Carbon Standard (VCS) and Climate Community and Biodiversity Alliance (CCB).

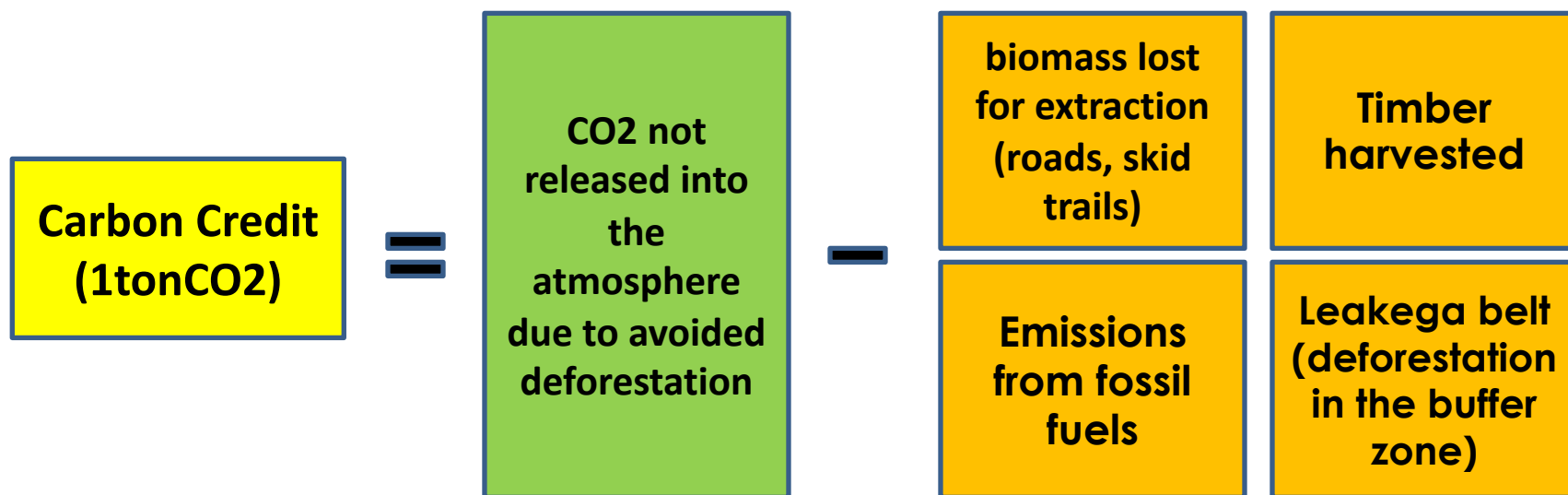


REDD Projects



1st Carbon Credits Project to be certified in a productive forest in the world

How does the REDD mechanism work?

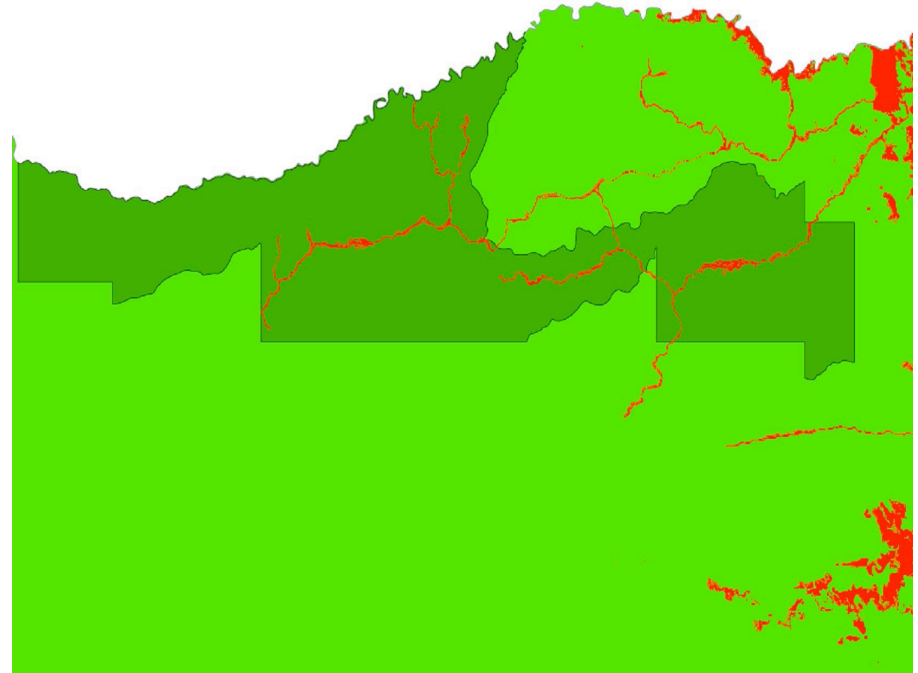
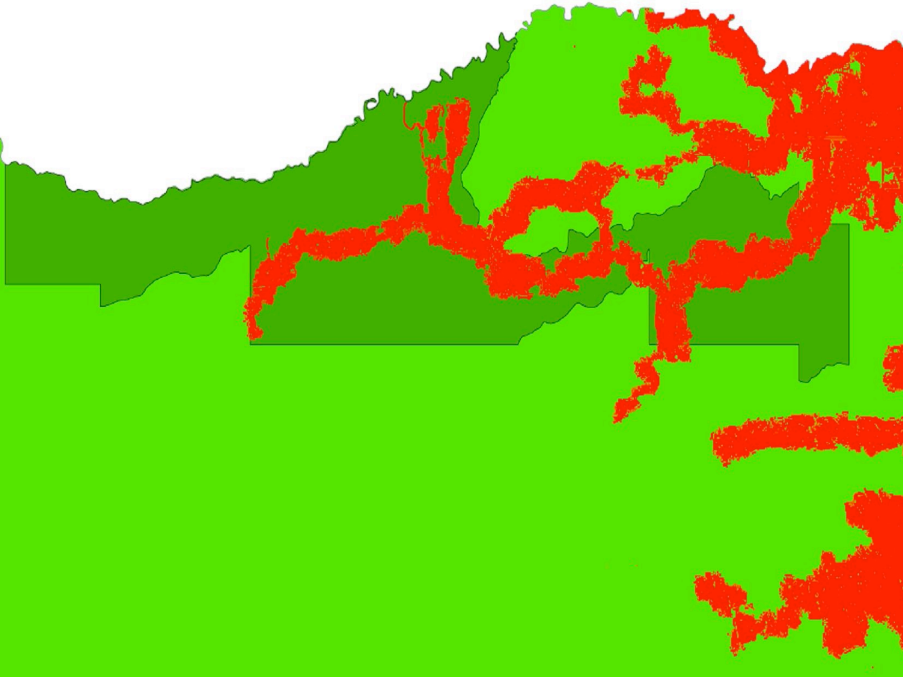


The Projects contribute to reduce the GHG emissions than without the actions of Maderacre would have occurred (avoided deforestation)

2 million CO2 tons not released into the atmosphere annually

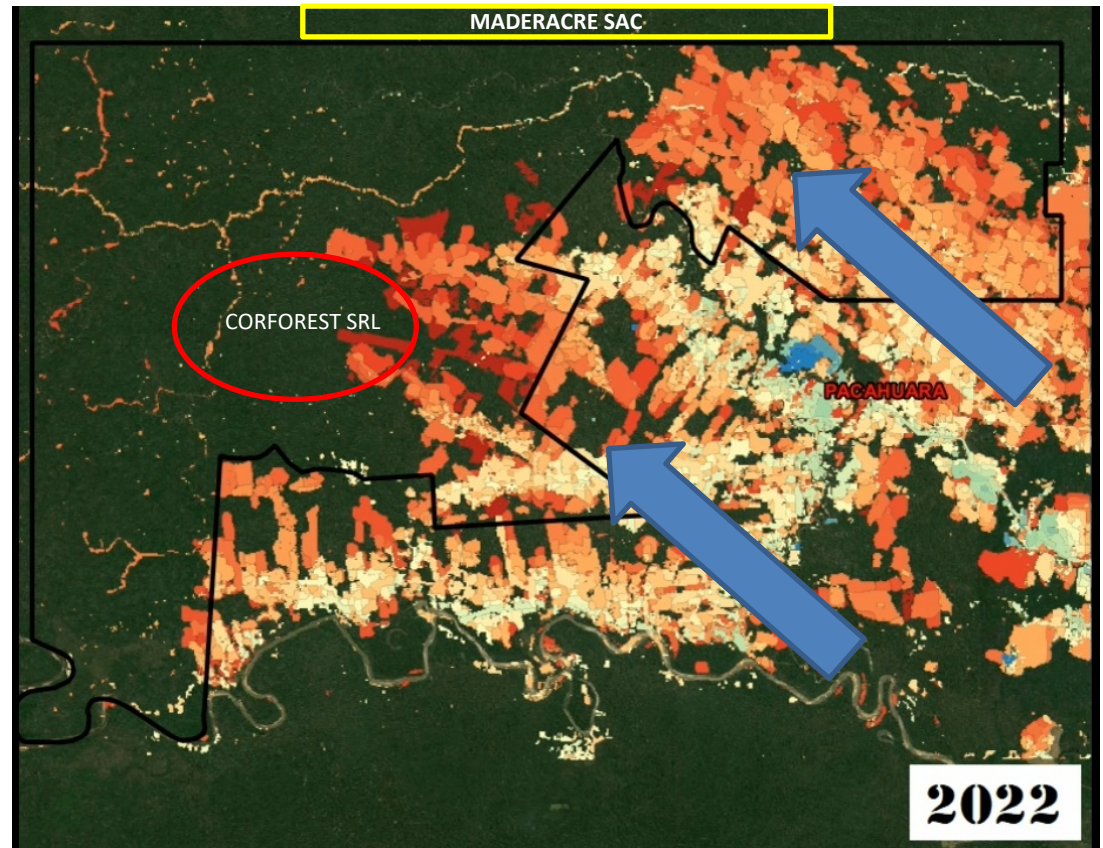
Deforestation expected vs real in the Region

Scenario **without** and **with** REDD Project



The difference will be the **deforestation and degradation avoided**

Deforestation in a
neighboring forest
concessions
(without a REDD
Project)



What is needed to develop a REDD Project?

A standing forest:

- Forest Concession
- Private Forest
- Reserve



Only feasible in a **developing country**

What is needed to develop a REDD Project?

Deforestation threat

Migrating Agriculture
Illegal mining
Urban expansion



The Project must prove additionality
(contribution to reduce the deforestation rate)

How do we reduce the deforestation rate?

- Control in the Project Area: custody and surveillance.
- Low impact logging certified by FSC
- Deforestation monitoring in the projects' buffer zone (leakage control).
- Work with local farmers and population to introduce better environmental practices to reduce deforestation (eg. Agroforestry)
- Sensibilization with local communities and population

Protection needs investment (coming from the carbon credits revenue)

Most known Carbon Credits Customers



Other Carbon Credits Metodologies (for tropical forest)

| Methodology | Objetive |
|----------------------------|--|
| Improved Forest Management | Carbon credits generated by the amount of timber harvested reduced against extraction as usual |
| Reduced Impact Logging | Carbon credits generated by the amount of biomass not lost due to more environmentally friendly operations in the forest |

Learned Lessons

- Timber responsibly harvested and carbon credits projects are compatible and complementary activities for a common goal:
Productive Conservation
- Productive Conservation: **Protects + creates jobs** / local development.
- Unnecessary (and dangerous) dichotomy Carbon Credits vs Timber sustainable extraction.

Unemployed population (poverty) will be the first deforestation driver

- Important promoting other Business Units to increase the standing forests' value: Biodiversity Ecosystem Services (FSC), Ecotourism, Brazilian nuts collection.

Challenges

- Carbon Credits revenue is key for forest concessions. But rules are changing from the Governments (nesting processes):
 - How to accomplish a national precise calculation?
(Deforestation baseline definition)
 - Creation of a national registry; authorization process issue?
 - Unfair competition from public projects?
- Voluntary market dominated by one main standard. More competition benefits all.
- Media perception. Sustainable timber producers are (key) part of the climate solution.



Merci

Jose Canchaya
Commercial Manager
Maderacre
jcanchaya@matim.pe
www.maderacre.com