

# DUBAI march 2017

## Maritime transport and logistics







- From the forest yard / free along side /free on board, to final destination, the transport is a part of the full package.
- Different knowledge from perfect to no idea about the complexity of the transport.
- ATIBT has decided to reactive the transport commission in order to give to all members an entry point to answer to various questions.

# Not so easy to make the good choice



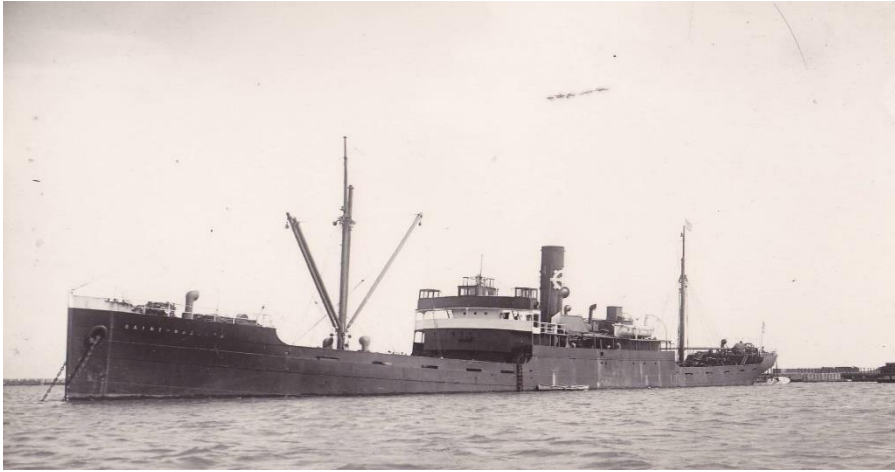


# Key points of the transport

- Reliability of the resource
  - Reliability of the supply chain
  - Reliability of the ship's owner
  - Reliability of the local agent
- 
- Reliability in your forwarding agent's
  - Subscription of insurance
  - Documents in time at destination to avoid extra expenses of storage.

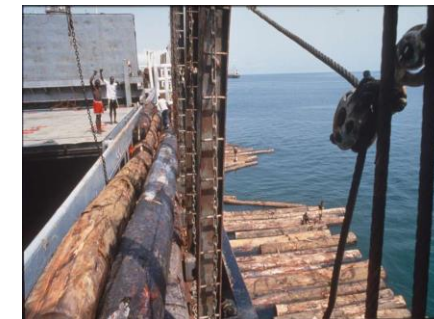
# Are you sure you know well the supply chain

Who are carrying your goods?





A long distance to the final destination  
with incertitude





## Insurance and transport



Didier Raux 2017



## INSURANCE

- Numerous of shippers or buyers are taking high risks when they are not signing an insurance to cover the transports.
- You may face to ordinary damage.
- **BUT**
- You may face to a general average as well.
- Without insurance the holder of the bill of lading can be persecuted.



## Bill of lading and Waybill

- Bill of lading signed stamped and handed over to the shipper.
- Electronic Bill of lading sent mail to shipper
- Waybill between agents to speed up the formalities. Both ends are fully confident
- But be not neglectful and be aware about the local habits between owner's agent and terminals/stevedores.

# transport partners of ATIBT



recently arrived to built the transport commission.



Didier Raux 2017



Thank you for your attention



**Dubai March 2017 Maritime  
Transport Commission feel free to contact me**



Didier Raux 2017