

# COCOA AGROFORESTRY SYSTEMS IN CONGO BASIN AND COTE D'IVOIRE

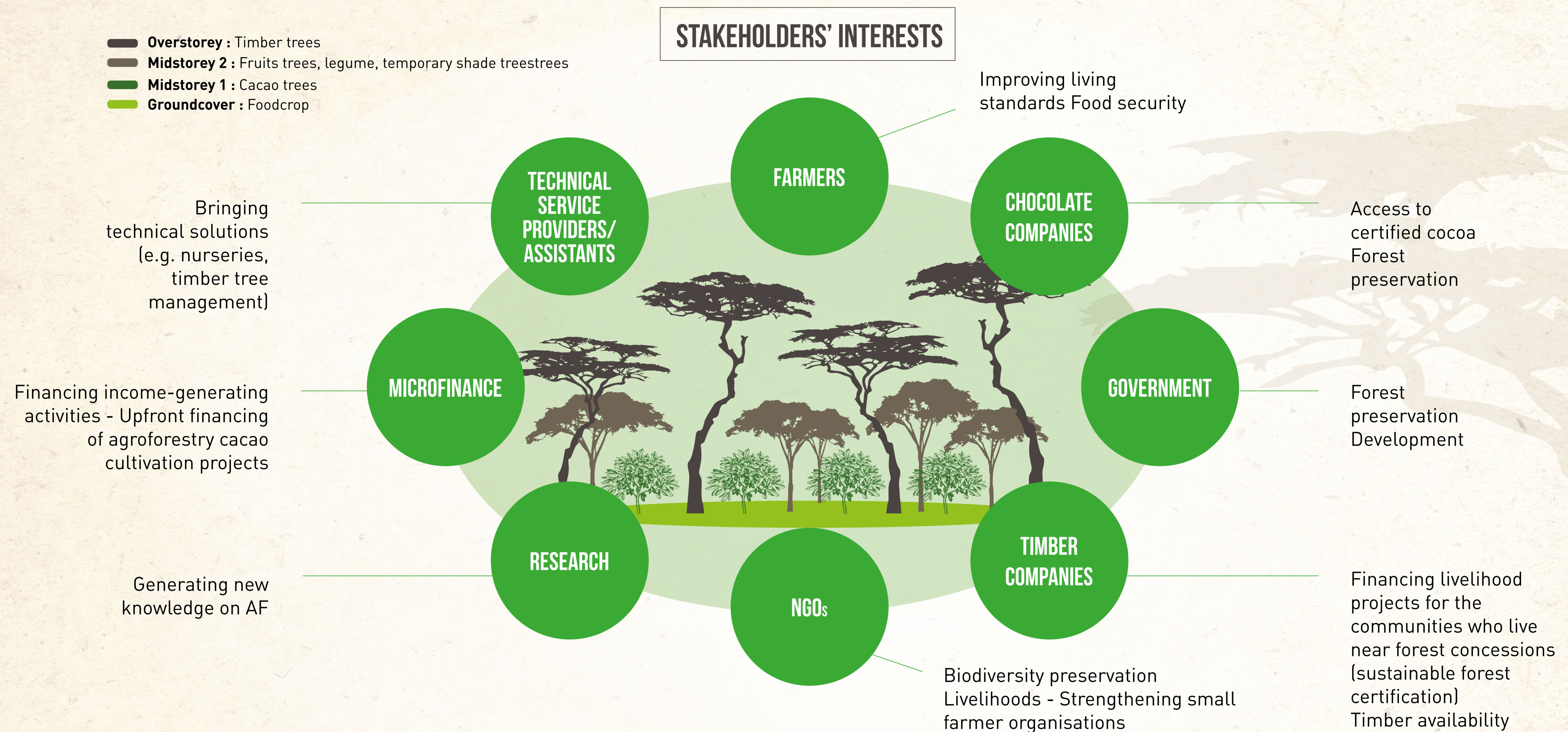


## THE ROLE OF TIMBER TREES



## FROM A DIVERSITY OF INITIAL LANDSCAPES:

## ONE GLOBAL APPROACH TO ACHIEVE A CACAO-TIMBER TREE ASSOCIATION MODEL



### KEY LEARNINGS

- The agroforestry model depends on production goals
- A strong synergy between farmers, NGOs and donors is essential to successful initiatives
- Funding is key to start off the initial stages of a project as the inability to pay for initial costs may prevent excellent investments from being made. A virtuous cycle is then triggered: aid > certification > livelihood improvement > savings > reinvestment > scaling up

### PROSPECTS

- Large-scale dissemination of knowledge of agroforestry systems to other Fair Trade certified cooperatives
- Enhancing the value of timber trees grown in agroforestry systems with the new 'Trees outside forest' PEFC standard
- Development of financial mechanisms
- The legal framework needs to be adapted



This poster is financed by FFEM, through the FLEGT-REDD+ project implemented by ATIBT.

Article references:  
Cocoa agroforestry systems in the Congo Basin and Côte d'Ivoire: The role of timber tree species The role of timber trees  
Fare Y.<sup>1</sup>, Duhesme C.<sup>2</sup>, Rivain S.<sup>3</sup>, Perthuisot N.<sup>3</sup>, Stoll J.<sup>4</sup>, Guittard B.<sup>5</sup>, Jobbé-Duval B.<sup>2</sup>  
The article is based on the following projects:  
Project FLEGT-REDD+ (2013-2020 / FFEM): The integration of Central and Western Africa's tropical timber industry into the FLEGT and REDD+ mechanisms  
Équité program (2016-2019 / FFEM-AFD): Strengthening family agriculture and supporting Fair Trade development in Western Africa.  
<sup>1</sup>Kinomé | <sup>2</sup>ATIBT | <sup>3</sup>Oréade-Brèche | <sup>4</sup>Commerce Équitable France | <sup>5</sup>AVSF



The information on this poster is based on an article written by the Agroforestry cluster of the Cité du Développement Durable.